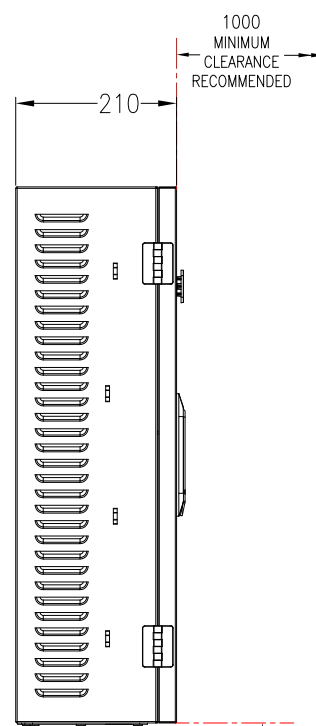
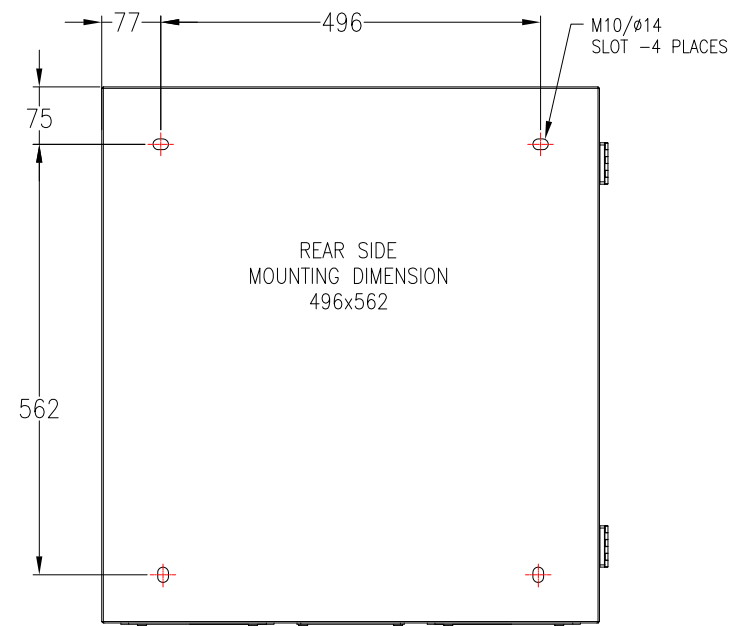


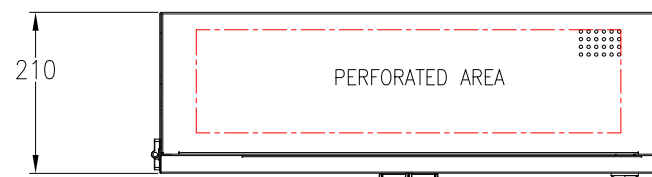
FRONT VIEW



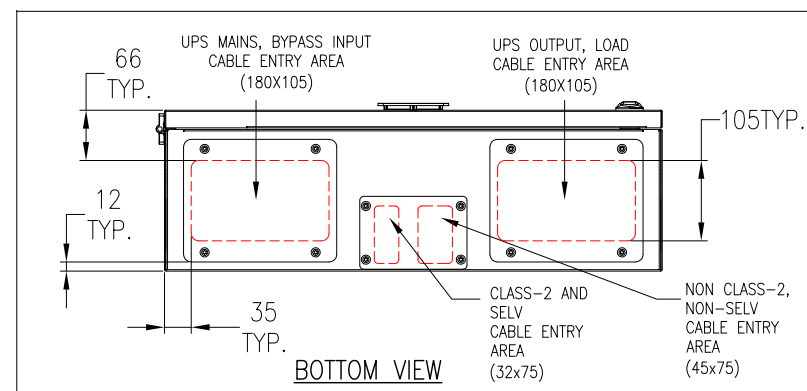
550  
MINIMUM  
CLEARANCE  
RECOMMENDED



REAR VIEW  
WALLMOUNT DETAILS



TOP VIEW



BOTTOM VIEW

- NOTES:
1. INSTALLATION SHALL COMPLY WITH ALL APPLICABLE NATIONAL, STATE AND LOCAL ELECTRICAL REGULATIONS.
  2. PLEASE REFER TO PRODUCT MANUALS FOR ADDITIONAL DETAILS PRIOR TO INSTALLATION AND SITE PREPARATION WORK.
  3. ALL DIMENSIONS ARE IN MILLIMETERS.
  4. CABLE ENTRY IS THROUGH THE BOTTOM OF UNIT.
  5. FRONT AND BOTTOM SERVICE ACCESS REQUIRED, RIGHT, LEFT SIDE VENTILATION CLEARANCES RECOMMENDED.
  6. NET WEIGHT OF THE UNIT IS 35kg.
  7. PROTECTION CLASS: IP20.
  8. PANEL COLOR: RAL 9003, GLOSS LEVEL 85%.
  9. OPERATING TEMPERATURE: 0°C TO 40°C.

THIS DRAWING AND SPECIFICATIONS HEREIN ARE THE PROPERTY OF SCHNEIDER ELECTRIC AND SHALL NOT BE COPIED, REPRODUCED OR USED IN WHOLE OR IN PART, AS THE BASIS FOR THE MANUFACTURE OR SALE OF ITEMS WITHOUT WRITTEN PERMISSION FROM SCHNEIDER ELECTRIC. THIS DRAWING IS BASED UPON LATEST AVAILABLE INFORMATION AND IS SUBJECT TO CHANGE WITHOUT NOTICE.

**Schneider**  
Electric

TITLE: GALAXY VS  
WALLMOUNT MAINTENANCE BYPASS PANEL  
10-30kW, 3PH 400V TWO UNITS  
GENERAL ARRANGEMENT

PROJECT: SUBMITTAL DRAWINGS SHEET 1 OF 3

DWG NO: GVSBBPAR10K30H

DRAWN: K NAGENDRA 23-SEP-19

ENGINEER: ChenLei BAO 11-OCT-19

APPROVED: JiaChen LIN 11-OCT-19

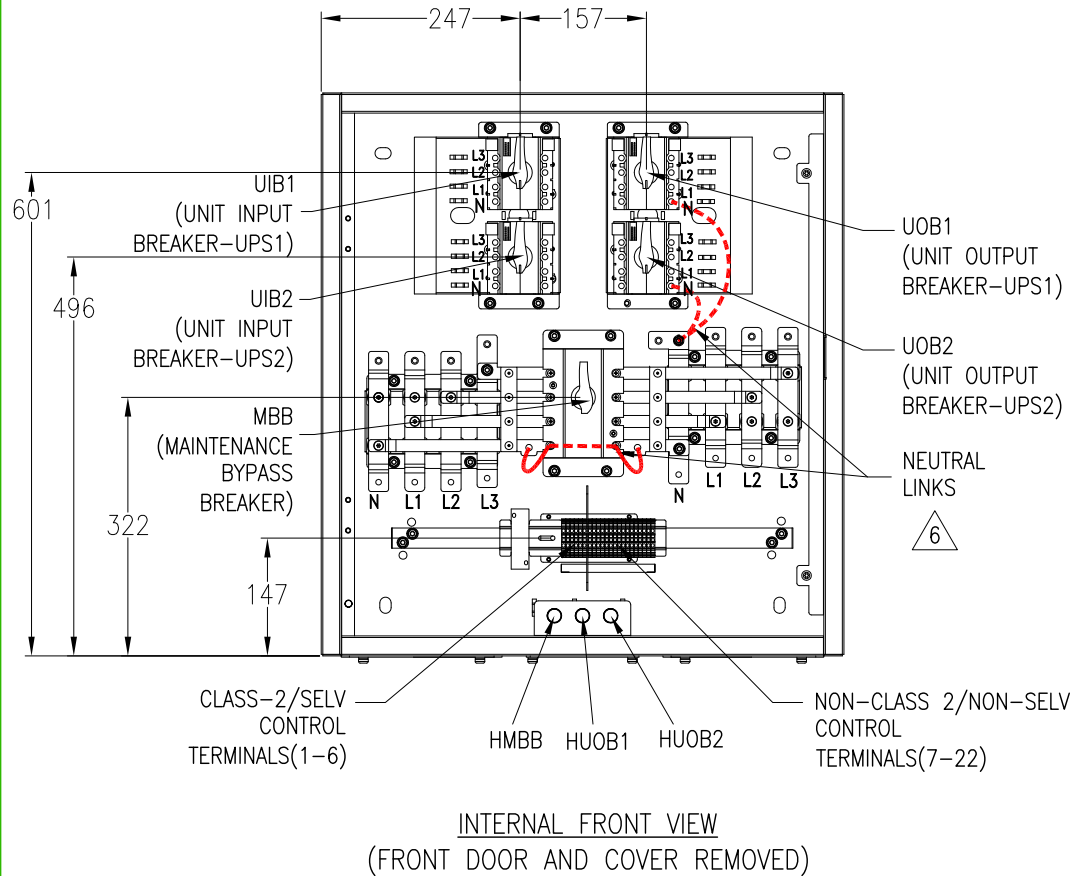
REV. 0

FIRST

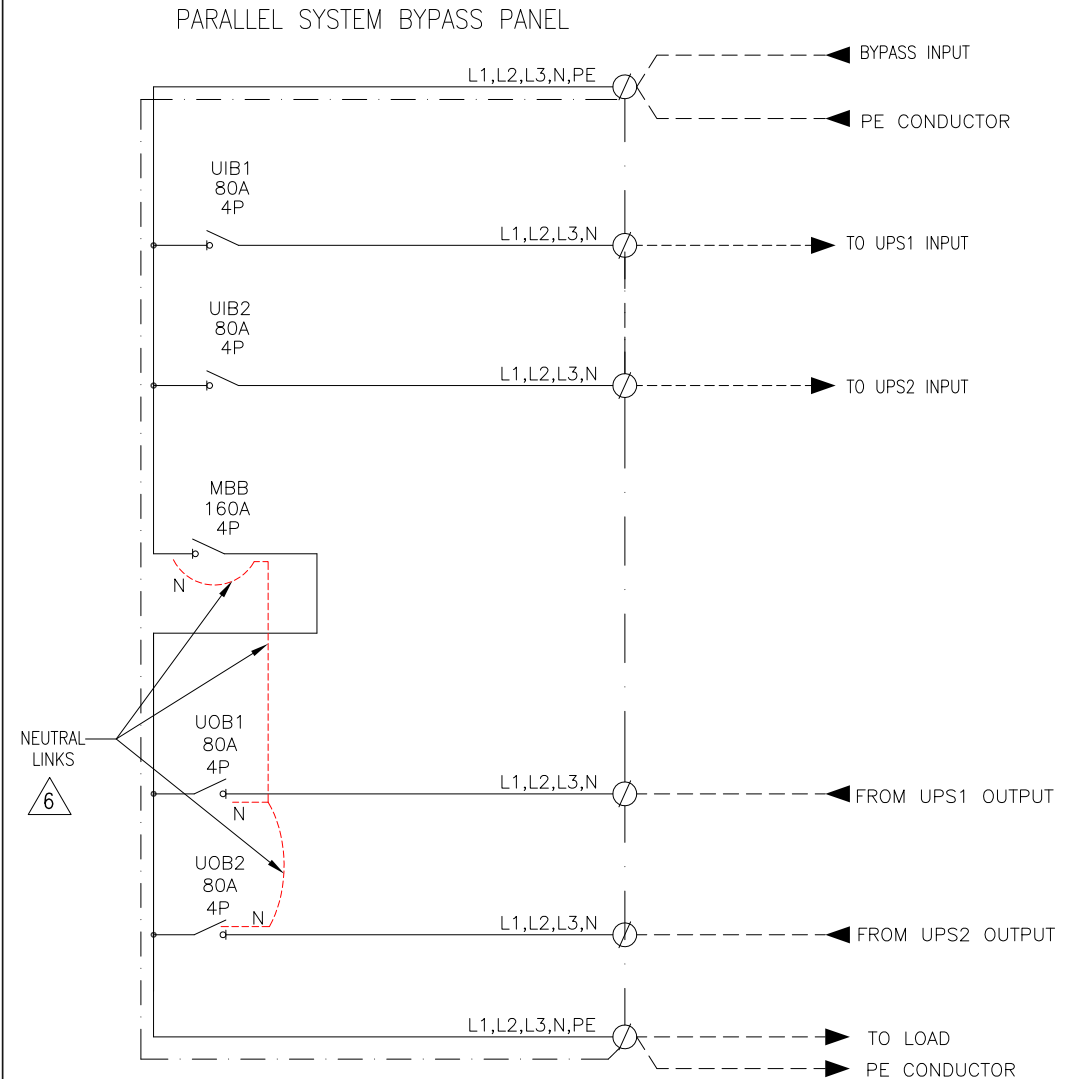
ANGLE

PROJECTION:

## INTERNAL DETAILS



## POWER CIRCUIT DIAGRAM



### NOTES:

1. INSTALLATION SHALL COMPLY WITH ALL APPLICABLE NATIONAL, STATE AND LOCAL ELECTRICAL REGULATIONS.
2. PLEASE REFER TO PRODUCT MANUALS FOR ADDITIONAL DETAILS PRIOR TO INSTALLATION AND SITE PREPARATION WORK.
3. ALL DIMENSIONS ARE IN MILLIMETERS.
4. DASH-DOT (— · — · —) LINES INSIDE OF MBP UNIT, REPRESENT PE-CONDUCTOR CONNECTION.
5. DASHED (— — —) LINES OUTSIDE OF MBP UNIT, REPRESENT CABLING PROVIDED BY OTHERS.
- △ 6. THE NEUTRAL JUMPERS MAKES A BOLTED CONNECTION OF THE NEUTRAL SO THAT THE NEUTRAL IS NOT DISCONNECTED WHEN THE 4-POLE BREAKERS ARE OPENED. DO NOT REMOVE THE NEUTRAL JUMPERS UNLESS ALLOWED BY LOCAL REGULATIONS.
7. MAXIMUM ALLOWABLE INPUT CABLE AND LOAD CABLE SIZE IS 35 Sqmm.
8. MAXIMUM ALLOWABLE BYPASS INPUT AND OUTPUT CABLE SIZE IS 16 Sqmm.
9. ROUTE THE SIGNAL CABLES SEPARATELY FROM THE POWER CABLES.

THIS DRAWING AND SPECIFICATIONS HEREIN ARE THE PROPERTY OF SCHNEIDER ELECTRIC AND SHALL NOT BE COPIED, REPRODUCED OR USED IN WHOLE OR IN PART, AS THE BASIS FOR THE MANUFACTURE OR SALE OF ITEMS WITHOUT WRITTEN PERMISSION FROM SCHNEIDER ELECTRIC. THIS DRAWING IS BASED UPON LATEST AVAILABLE INFORMATION AND IS SUBJECT TO CHANGE WITHOUT NOTICE.

**Schneider Electric**

TITLE: GALAXY VS WALLMOUNT MAINTENANCE BYPASS PANEL 10-30kW, 3PH 400V TWO UNITS INTERNAL VIEW AND POWER CIRCUIT

DWG NO: GVSBBPAR10K30H

REV. 0

DRAWN: K NAGENDRA 23-SEP-19

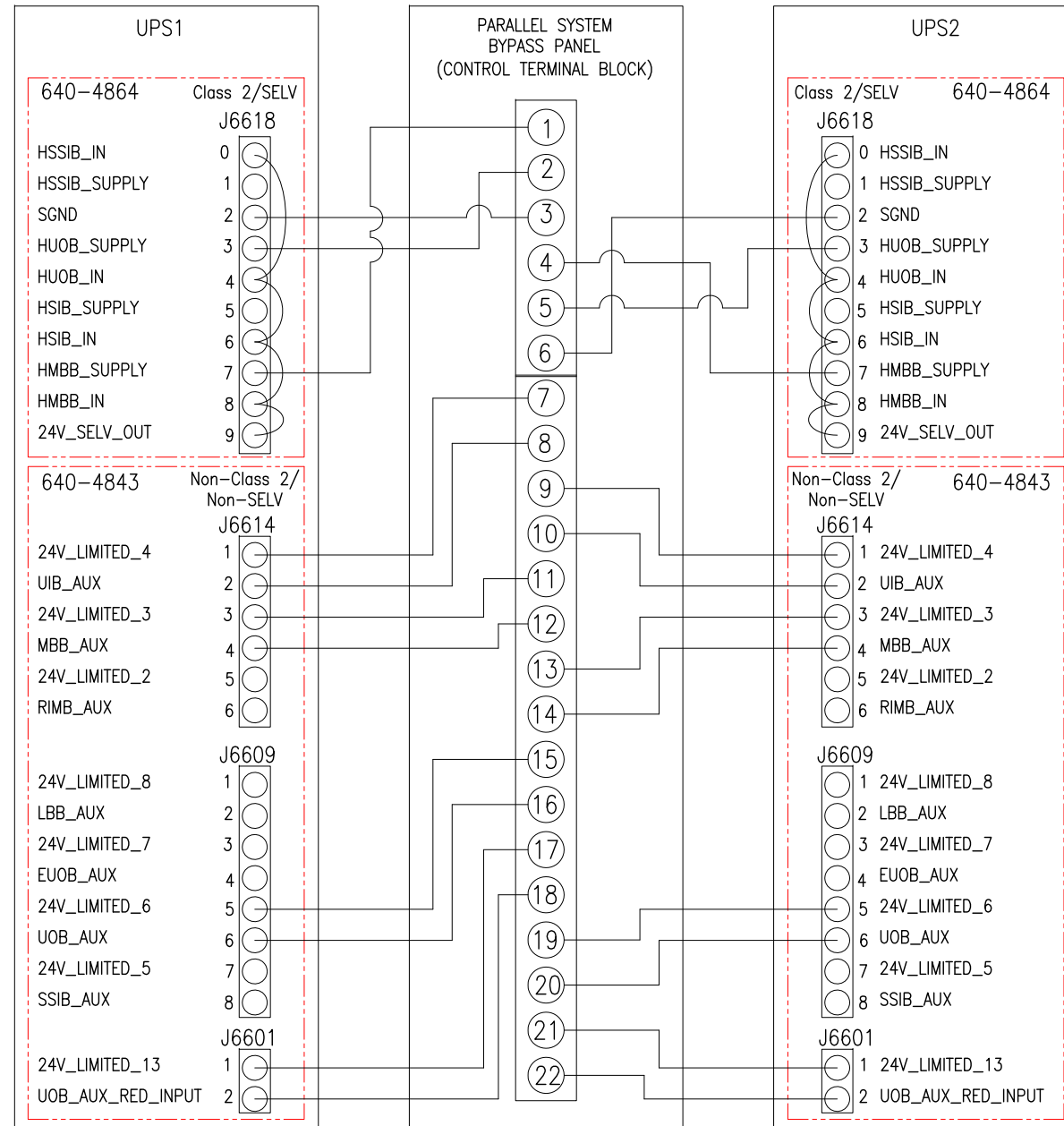
ENGINEER: ChenLei BAO 11-OCT-19

APPROVED: JiaChen LIN 11-OCT-19

PROJECT: SUBMITTAL DRAWINGS SHEET 2 OF 3

FIRST ANGLE PROJECTION

# INTERFACE WIRING BETWEEN UPSs' AND SYSTEM BYPASS PANEL



- NOTES:**
1. INSTALLATION SHALL COMPLY WITH ALL APPLICABLE NATIONAL, STATE AND LOCAL ELECTRICAL REGULATIONS.
  2. PLEASE REFER TO PRODUCT MANUALS FOR ADDITIONAL DETAILS PRIOR TO INSTALLATION AND SITE PREPARATION WORK.
  3. CABLES BETWEEN UPSs AND SYSTEM BYPASS PANEL PROVIDED BY OTHERS.
  4. ROUTE THE CLASS 2/SELV CABLES SEPARATELY FROM THE NON-CLASS 2/NON-SELV CABLES.

THIS DRAWING AND SPECIFICATIONS HEREIN ARE THE PROPERTY OF SCHNEIDER ELECTRIC AND SHALL NOT BE COPIED, REPRODUCED OR USED IN WHOLE OR IN PART, AS THE BASIS FOR THE MANUFACTURE OR SALE OF ITEMS WITHOUT WRITTEN PERMISSION FROM SCHNEIDER ELECTRIC. THIS DRAWING IS BASED UPON LATEST AVAILABLE INFORMATION AND IS SUBJECT TO CHANGE WITHOUT NOTICE.

**Schneider Electric**

TITLE: GALAXY VS  
WALLMOUNT MAINTENANCE BYPASS PANEL  
10-30KW, 3PH 400V TWO UNITS  
CONTROL CONNECTIONS

DWG NO: GVSBBPAR10K30H

REV. 0

DRAWN: K NAGENDRA

23-SEP-19

ENGINEER: ChenLei BAO

11-OCT-19

APPROVED: JiaChen LIN

11-OCT-19

PROJECT: SUBMITTAL DRAWINGS SHEET 3 OF 3

ANGLE OF PROJECTION  
N/A